

1/114 Bridge Street, Schofields, NSW 2762

Sold House

Saturday, 4 May 2024



1/114 Bridge Street, Schofields, NSW 2762

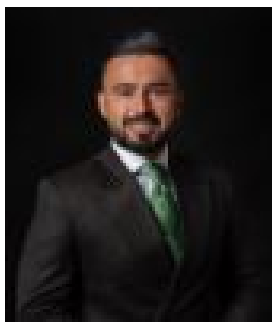
Bedrooms: 4

Bathrooms: 2

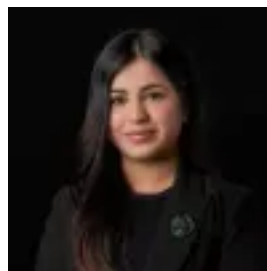
Parkings: 1

Area: 292 m2

Type: House



Amit Kumar
0288964336



Siya Sachdeva
0288964336

\$1,005,000

Situated in one of the most convenient locations of Schofields, this well-presented residence offers the perfect blend of modern design and comfortable family living with desirable opportunities for the growing family as well as an ideal investment opportunity. Step into versatility with this impeccably designed home, boasting a seamless open plan layout that effortlessly combines the kitchen, dining, and living areas. A front formal living room adds an elegant touch to the residence, offering a perfect space for relaxation or entertaining guests. Flooded with natural light throughout, the house creates an inviting ambiance that extends to the spacious backyard, providing endless opportunities for outdoor enjoyment and entertainment. The well appointed kitchen is equipped with features to elevate your cooking experience. High-quality stainless steel appliances, including a burner gas cooktop and 600mm oven, grace the space, complemented by sleek stone benchtops that exude luxury. Ample storage ensures that every utensil and ingredient has its place, making meal preparation a breeze in this culinary haven. Retreat to tranquility in the four generously sized bedrooms, where comfort and space reign supreme. The master bedroom is a true sanctuary, boasting a private ensuite bathroom, walk-in wardrobe and balcony, offering a serene escape. Three of the bedrooms feature built-in robes and the second bedroom also has access to the balcony. Features you will love:- Ducted air conditioning- Formal living area upon entering- Abundance of natural light throughout the house- Seamless open plan layout ideal for modern living- Tiled flooring to common area- Single lock up garage with internal access

Location Highlights:- 3 minutes drive and walking distance to Schofields Public School and Schofields Park- 3 minutes drive and walking distance to Schofields Train Station and Schofields Shopping Village - 7 Minutes drive to Tallawong Metro Station- 11 minutes drive to Rouse Hill Town Centre- Short distance to local cafes and Medical Centres

Disclaimer: All information contained herein is obtained from property owners or third-party sources which we believe are reliable. We have no reason to doubt its accuracy, however, we cannot guarantee it. All interested person/s should rely on their own enquiries.