

105/16 Hudson Street, Lewisham, NSW 2049

Apartment For Rent

Saturday, 4 May 2024

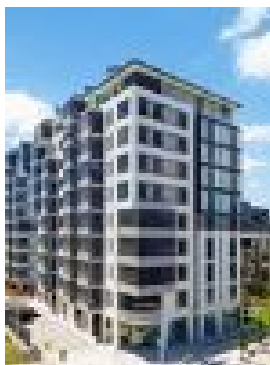


105/16 Hudson Street, Lewisham, NSW 2049

Bedrooms: 1

Bathrooms: 1

Type: Apartment



Luna Lewisham

0448263657

\$680 per week

Designer Apartments, Most with Storage | 7km to Sydney CBD | Close to Transport, Universities, Shopping Centres | Gymnasium | Onsite Building Management | Indoor Aquatic Centre with Heated Pool, Spa, Sauna | Onsite retail | Secure Parking | Onsite Park with Children's Playground & Landscaped Gardens

Primly positioned just 7kms from the Sydney CBD in the contemporary pocket of Lewisham, you'll love living at Luna. With easy access to an abundance of transport, indulge in convenience, with popular shopping and meeting grounds such as Marrickville Metro and Leichhardt Norton Plaza only a short distance away. Home to 286 residences and 3,400sqm of lush parklands featuring a children's playground, Luna offers 5-star resort-style facilities and lavish apartment interiors, uniquely designed to suit the individuality of your lifestyle.

APARTMENT FEATURES: Oversized 2 bedroom apartments with mirror built-in wardrobes
Master bedroom with spacious ensuite bathroom
Modern, open plan layout with timber-tone tiled flooring throughout
Contemporary kitchens featuring Caesarstone benchtops, duel sinks and European stainless steel appliances including microwave, gas cook top and integrated dishwasher
Luxurious bathroom with sophisticated finishes including Caesarstone counter tops, frameless glass shower screens and floor-to-ceiling tiles
Many apartments include secure parking and storage with direct lift access
Internal laundry with dryer
Split system air-conditioning and LED downlights throughout
Security intercom system

DEVELOPMENT FEATURES: Indoor aquatic centre with 25m heated pool, spa and sauna
Fully-equipped gymnasium
Comprehensive security including intercom system, CCTV cameras and secure building access
Onsite retail including a convenience store and cafe
Dedicated onsite Building Manager ensures all apartments and facilities are kept to a high standard, and any maintenance is promptly addressed - Chinese speaking available on request
Super-fast broadband available at up to 100 Mbps
Onsite park with landscaped gardens and children's playground
Bicycle storage racks

LOCATION & LIFESTYLE: 7km from Sydney CBD
Lewisham West Light Rail Station at your doorstep
950m to Petersham Park
500m to Lewisham Train Station
Close vicinity of Universities and schools, including The University of Sydney and University of Technology Sydney
Close to Westfield Burwood, Marrickville Metro, Leichhardt MarketPlace and Norton Plaza
Short drive to Newtown dining and retail, Leichardt Aquatic Centre, and Sydney Fish Markets

BUILDING MANAGEMENT OFFICE IS LOCATED AT 16 HUDSON ST, LEWISHAM

CONTACT BUILDING MANAGEMENT BY EMAIL TO ARRANGE YOUR PRIVATE INSPECTION TODAY!

* Photos are indicative of features and finishes only
* Internet connection/usage is payable by the tenant
* Electricity, Gas and Internet supplied to the premises from an embedded network
** Disclaimer: Meriton Group has made all reasonable attempts to verify the accuracy of the information provided but does not warrant or guarantee such accuracy. Photography and illustrations are indicative representations of features and finishes only. Any interested persons should rely on their own enquiries to verify the information provided, including those related to available utility and internet service providers as additional connection fees may apply.**