

13 Valleyfield Court, Wattle Grove, NSW 2173

House For Sale

Tuesday, 27 February 2024

DEMIANS
ESTATE AGENTS

13 Valleyfield Court, Wattle Grove, NSW 2173

Bedrooms: 9

Bathrooms: 5

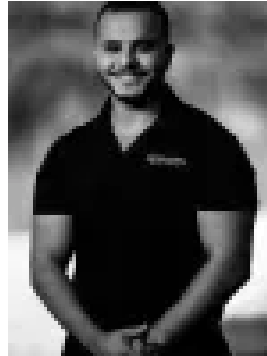
Parkings: 3

Area: 891 m2

Type: House



Michael Demian
0404601084



Mark Demian
0404601084

Auction

Set on a prized corner block, this exceptional family home stands as a rare gem, positioned to rank among the largest and most prestigious residences in Wattle Grove. Enjoying a peaceful cul-de-sac setting, the property boasts an 891sqm block that overlooks the serene lake, providing idyllic views and a tranquil atmosphere. Providing an abundance of opportunity is an adjoining second dwelling that offers versatility, easily adaptable for investment purposes (STCA) or accommodating two families. Upon arrival, the property makes a grand statement with its well-positioned setback, lengthy driveway leading to a spacious triple garage, and ample side access for extra vehicles. As you step inside, you'll be captivated by the intricate details such as newly laid flooring, downlights, and fresh paint. The expansive front formal living area and dining area are perfect for gatherings or dinners. A downstairs bedroom with built-ins is perfectly accompanied by a full bathroom with a shower. The gourmet gas kitchen with stone benchtops, walk-in pantry, and quality appliances, including a fitted microwave, is sure to impress. Proceeding into the combined open plan living/dining area, you'll find glass-wrapped interiors that invite abundant natural light into the heart of the home. Enjoy uninterrupted views of the sunlit outdoors, where the lake creates an awe-inspiring backdrop to the internal space. An expansive wrap-around backyard, is designed for seamless entertaining and relaxation with three undercover areas and a large grass area, hosting memorable gathering has never been easier. Kids and pets can run around and play, plus, it offers the potential to install a pool without compromising on any space. Upstairs, you'll find ample accommodation with massive bedrooms, each with a walk-in robe. The main bathroom features a corner spa, shower, and separate toilet. The master bedroom boasts an immaculate ensuite. The 4-bedroom attached dwelling offers its own separate entrance and is perfect for extra family members or as a lucrative investment. The home boasts a large living area, downstairs bathroom with shower, gas kitchen with stone benchtops serving as a breakfast bar, tiled splashback, & a dining area. Upstairs, includes 3 bedrooms, two with built-ins, and a main bathroom with a bath, shower, and separate toilet. It also features a retreat with its own living area, sliding door access & bedroom with A/C. Features:- Solar- Ducted a/c