

**169 Highfield Road, Camberwell, Vic 3124**

**HEAVYSIDE**

**House For Sale**

Friday, 19 April 2024

169 Highfield Road, Camberwell, Vic 3124

**Bedrooms: 5**

**Bathrooms: 3**

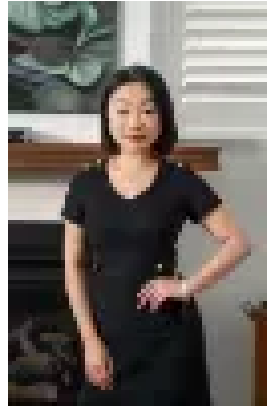
**Parkings: 2**

**Area: 503 m2**

**Type: House**



Tim Heavyside  
0394703390



Kiana Jin  
0394703390

**\$3,200,000 - \$3,500,000**

Watch the auction live here: [https://heavyside.co/live-auction/\(Corner of Amy Street\)](https://heavyside.co/live-auction/(Corner%20of%20Amy%20Street))**THE PROPERTY**Presenting one of Camberwell's finest homes, this architecturally designed masterpiece is built by renown local builder Willis Construction. This family home exudes timeless elegance and sophistication. With five bedrooms, three bathrooms, and multiple living areas, the property offers ample space for family gatherings.Outside, a heated salt pool nestled within a leafy outdoor area provides a tranquil retreat. North-facing bedrooms and living areas flood the interior with natural light, enhancing the ambiance with a beautiful outlook over Amy Street. Equipped with reverse-cycle zoned heating and cooling for year-round comfort, this home boasts oak-engineered hard-wearing flooring and a chef's kitchen featuring an induction cooktop, integrated appliances, and Caesarstone benchtop with a sink positioned away from the island.Seamlessly integrated, the kitchen and living area flow into the courtyard, perfect for entertaining or unwinding. The master bedroom offers tranquil pool views, an ensuite with double sinks, a walk-in robe, and a freestanding bath, completing this exceptional residence designed for modern living at its finest.**THE FEATURES**• Architecturally designed with 5 bedrooms, multiple living areas, and a double garage• Heated Salt pool with a leafy outdoor area• Gable structure with standing seam Colorbond roofing providing vaulted high ceilings• North-facing bedrooms and living areas• Reverse-cycle zoned heating and cooling• Oak-engineered hard-wearing flooring• Kitchen with induction cooktop, integrated appliances, and Caesarstone benchtop• Open kitchen/living/dining with large sliding doors to fuse indoor and outdoor areas.**THE LOCATION**Immerse yourself in the convenience of living just a short stroll away from both Middle Camberwell and Hartwell shops, lively cafes including Dish & Spoon, Leo's Supermarket, and both Hartwell and Burwood train stations, as well as the nearby Riversdale Rd Tram or Toorak Rd Tram. Revel in the proximity to Highfield Park and Lynden Park , alongside prestigious educational institutions such as Hartwell and Canterbury Primary School, St Dominic's Primary School, Strathcona Girls Grammar, Siena College, Camberwell High School, Presbyterian Ladies College as well as Deakin University.**THE TERMS:** 30|45|60