

20 Woolmers Court, Wattle Grove, NSW 2173

House For Sale

Wednesday, 1 May 2024

20 Woolmers Court, Wattle Grove, NSW 2173

Bedrooms: 4

Bathrooms: 2

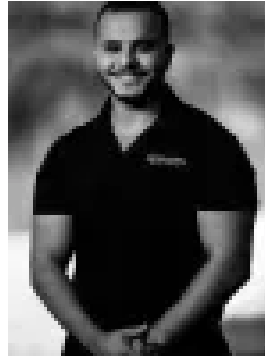
Parkings: 2

Area: 505 m2

Type: House



Michael Demian
0404601084



Mark Demian
0404601084

Auction

This exclusive residence epitomises a perfect blend of timeless charm and modern comfort, offering an unparalleled living experience accentuated by its exceptional outdoor space. Crafted to fulfill every aspect of ideal living, this magnificent family home caters to discerning buyers seeking a luxurious lifestyle characterised by spaciousness, comfort, and absolute low maintenance. Tucked away in a serene cul-de-sac, the charm of this residence is evident from the moment you arrive. A beautifully landscaped front garden sets the stage, complementing the facade, while a long driveway and spacious double garage provide ample parking. As soon as you step inside, you're greeted by a seamless fusion of elegance and functionality. Bespoke details like plantation shutters, stylish floorboards, and downlights adorn the interior, creating a sophisticated atmosphere that's further enhanced by fresh paint throughout the space. An expansive front living area greets you upon entry, offering a cozy atmosphere for intimate gatherings and seamlessly connecting to the gourmet gas kitchen. The immaculate kitchen boasts S/steel appliances, tiled flooring, a glass splashback, extended benchtops serving as a breakfast bar, and ample cupboard space with a built-in pantry. The heart of the home is a vibrant social space, where the casual living, dining, and kitchen areas seamlessly merge, designed for entertaining and enjoying quality time with loved ones. Escape outside and find a resort-style retreat, perfect for entertaining. Make lasting memories with loved ones on the expansive timber decking leading to the massive pool area- an ideal summer escape with plenty of room for sun lounging. Kids and pets can enjoy the small grass area with side access, alongside a shed for storage needs, all with minimal upkeep. This outdoor haven is the ultimate gathering spot for year-round enjoyment, offering endless relaxation and fun. Retreat to the master suite, offering a large walk in robe and a luxurious ensuite with a glass frameless shower accented by chic matte black tapware. All other bedrooms are spacious and include built-in robes, perfectly complemented by a pristine main bathroom and separate toilet for added convenience. Features: Ducted A/C.