

22 Ciara Street, Grantham Farm, NSW 2765

Laing+Simmons

House For Sale

Thursday, 4 April 2024

22 Ciara Street, Grantham Farm, NSW 2765

Bedrooms: 4

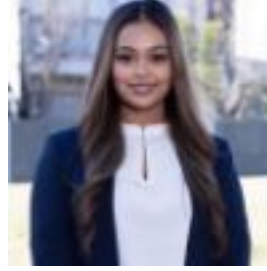
Bathrooms: 2

Parkings: 1

Type: House



Raj Mangat
0433330722



Shantelle Sharma
0433330722

Price Guide: \$ 999,999 - \$ 1,049,999

Laing + Simmons proudly presents this impeccably styled family home, showcasing a versatile floor plan and convenient lifestyle ideally located in the heart of Grantham Farm. Experience easy access to schools, shopping centres, trendy cafes, and all essential amenities, making your daily life a breeze. Every inch of this home has been thoughtfully crafted to create a harmonious living space that's both stylish and functionally tailor-made for your family. Key Features:

- Four generously proportioned bedrooms with built-in robes. The luxurious master suite features a fully tiled ensuite, a vanity with ample storage, and a spacious walk-in wardrobe for ultimate comfort and convenience.
- Two bathrooms with main featuring a freestanding bathtub with a large niche, fully tiled walls, and a spacious vanity with plenty of storage.
- Additional powder room downstairs for added convince for guests and spacious internal laundry.
- The kitchen is complete with gas cooking, stainless steel appliances, a sleek walk-in pantry, a sizable 40mm benchtop and abundant storage solutions.
- Seamless open-plan design integrates the dining, kitchen, and living areas.
- A well-sized backyard with outdoor entertainment area

Additional Features: Ducted AC, downlights throughout, floorboards, extra storage under the stairs and single remote-control garage with internal access. Location Highlights:

- Within walking distance to a newly opened kids' park.
- 1.9km from Riverstone Village.
- 2.8km from Riverstone Station.
- 2.5km from Carmel Village Shopping Centre.
- 5.1km from Tallawong Metro Station.
- 7.4km from Rouse Hill Town Centre.

Schools & Education:

- 1km from St. John's Primary School.
- 1.3km from Riverstone Public School.
- 1.4km from Norwest Christian School.
- 1.6km from Riverstone High School.

Seize this opportunity now! For more information or to schedule an inspection, please contact Raj Mangat at 0433 330 722. Disclaimer: The above information has been sourced from what we believe to be reliable sources. However, we cannot guarantee its accuracy and do not accept responsibility for any inaccuracies. Interested parties are encouraged to conduct their own inquiries and assessments to verify the accuracy of this information.