

2702/187 Liverpool Street, Sydney, NSW 2000



Sold Apartment

Saturday, 9 December 2023

2702/187 Liverpool Street, Sydney, NSW 2000

Bedrooms: 2

Bathrooms: 2

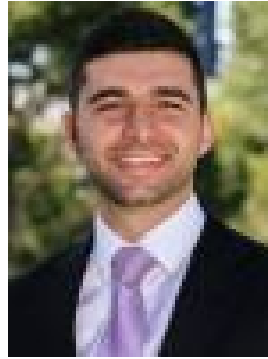
Parkings: 1

Area: 101 m2

Type: Apartment



Tasman Fallshaw
0414990990



Anthony Kannis
0499007711

\$2,190,000

Set high above Hyde Park in 'The Connaught', one of eastern Sydney's most highly regarded communities, this exceptional apartment offers a lifestyle opportunity like no other. With views that stretch uninterrupted across Hyde Park to St Marys, the Opera House and Harbour, this is inner city living at its finest.

KEY FEATURES
The layout - Opening to embrace the light of a prized due northern aspect, the home is designed with entertaining in mind with a large combined lounge and dining area that flows to a balcony and the view beyond. Both bedrooms are secluded at the rear of the home, ensuring peace and privacy in equal measure.
The facilities - Complete with a rooftop pool that offers a perspective unlike any other with views that stretch across the harbour to North Head, the resort style facilities of 'The Connaught' include a 24 hour concierge, gym, spa, and sauna.
The lifestyle - Occupying a premier corner position on Whitlam Square at the western end of Oxford Street, it is but metres to the cafes, restaurants, and nightclubs of one of the world's foremost entertainment precincts. A walk to train stations, museums and the city centre, everything you need is at your doorstep.

WHAT YOU NEED TO KNOW
Strata - \$3,377 per quarter
Rates - \$512 per quarter
Water - \$180 per quarter
Area - 101 square metres

AT A GLANCE- Magnificent views over the Anzac Memorial- Well presented with understated original finishes throughout- Offering minor scope for further enhancement if so desired- Generous double bedrooms, main with an ensuite, walk-in- Inviting kitchen has electric appliances and ample storage- Open plan lounge and dining area, three separate balconies- Ducted air conditioning, high ceilings and security intercom- Secure parking for one vehicle, lift access, private outlook- Rooftop swimming pool, sundeck, spa and sauna- Gym, concierge service, 24hr security- Perfect for the discerning investor or professional couple

Disclaimer: All information contained herewith, including but not limited to the general property description, price and the address, is provided to City Living by third parties. We have obtained this information from sources we believe to be reliable; however, we cannot guarantee its accuracy. The information contained herewith should not be relied upon and you should make your own enquiries and seek advice in respect of this property.