

311/1101 Toorak Road, Camberwell, Vic 3124

HEAVYSIDE

Apartment For Sale

Monday, 22 April 2024

311/1101 Toorak Road, Camberwell, Vic 3124

Bedrooms: 2

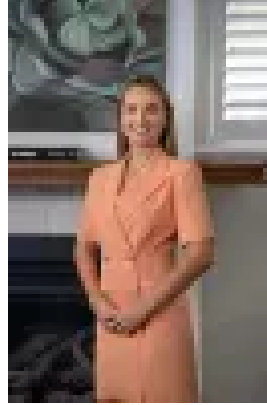
Bathrooms: 2

Parkings: 1

Type: Apartment



Tim Heavyside
0394703390



Paige Heavyside
0394703390

\$480,000 - \$520,000

THE PROPERTY Perfectly positioned, with trams, shops and cafés on your doorstep, and the CBD within easy reach, this contemporary two-bedroom apartment combines easy living with exceptional lifestyle convenience. Tucked within the prominent Mayada building, the majestic street appeal of the complex is matched with the serenity of sparkling modern interiors and deluxe finishes throughout. Generously sized and awash in natural light, the living and dining zone is a haven for relaxation, with glass sliding doors opening up to the tranquil private balcony, backdropped by stunning leafy views. Cooking is a pleasure in the sleek kitchen flaunting glass splashbacks, Miele cook top and dishwasher and abundant storage, featuring everything you need for culinary success. Two generous bedrooms include plush carpet underfoot and built-in robes, with the main boasting a sparkling ensuite and the other serviced by the family bathroom. Additional inclusions of a European laundry, heating and cooling, single secure car space, storage cage and complex gymnasium add further value and are certain to please.

THE FEATURES

- Contemporary easy-care two-bedroom, two-bathroom apartment
- Positioned within the deluxe Mayada complex in Hartwell Village
- Sleek kitchen features glass splashbacks and Miele appliance suite
- Two plush bedrooms include BIRs, the main with elegant ensuite
- Sparkling main bathroom includes shower, vanity and toilet
- Large private balcony capturing tranquil leafy and rooftop views
- Single secure car space with storage cage for added convenience
- Complex facilities include a gymnasium and restaurant
- Stroll to trams, trains, shops, cafés, parkland & schools

THE LOCATION Ideally situated in an elite pocket in the centre of Hartwell Village, with trams on your doorstep, Hartwell train station a short stroll away, and Camberwell Junction within easy reach. Zoned to Camberwell High School and Hartwell Primary, and mere minutes away from Sienna College, Strathcona Baptist Girls' Grammar and Scare Coer.

THE TERMS: 30|45|60