

401/1 Pottinger Street, Walsh Bay, NSW 2000



Terrace For Sale

Saturday, 20 January 2024

401/1 Pottinger Street, Walsh Bay, NSW 2000

Bedrooms: 2

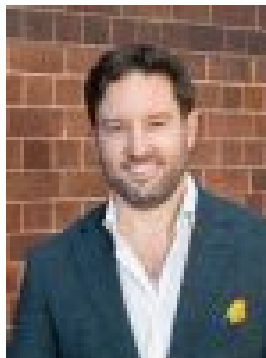
Bathrooms: 2

Parkings: 1

Type: Terrace



Richard Shalhoub
0414466973



Richard Sholl
0430803424

Price on Request

Enjoying a prized position in the tightly-held Parbury Building, this stylish apartment captures magnificent Harbour Bridge views framed by vignettes of Pottinger Park and Dawes Point. It is set in a quiet cul-de-sac, in a walk to everywhere location.- Oversized 136sqm layout with seamless in/outdoor transitions- Clever design with open living/dining, separate meals area- Gourmet stone kitchen equipped with Miele gas appliances- Sunlit covered entertainment terrace with sliding louvers- Unobstructed views of the Harbour Bridge and Pottinger Park- Well-proportioned bedrooms appointed with built-in wardrobes- Stylish bathrooms, internal laundry, ducted air conditioning- Bedrooms enjoy access to balcony, main with full ensuite- Resident access to indoor pool, gym, building management- Convenient lift access to secure car space, storage cage