

502/6 Gertrude Street, Wollie Creek, NSW, 2205

Sold Apartment

Friday, 22 September 2023



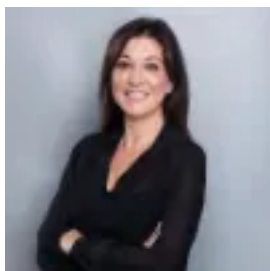
502/6 Gertrude Street, Wollie Creek, NSW, 2205

Bedrooms: 2

Bathrooms: 2

Parkings: 1

Type: Apartment



Vanessa White

0292872777

Contemporary park-side apartment with abundant light and leafy views

This modern apartment boasts a prime position in Wollli Creek's impressive Cahill Gardens, featuring natural light and expansive park views. A thoughtful design combines lounge, dining and kitchen with floor to ceiling glass, easterly aspect and balcony overlooking park and skyline beyond. The master bedroom enjoys an equally delightful outlook plus ensuite, while the second bedroom has full-length windows and door to the balcony.

The location, beside the Cooks River and Cahill Park, is highly appealing with plenty of green and peaceful space. Cafes, shops, eateries and supermarket are moments away, as is Wollli Creek station with trains to the city. Meanwhile, the complex provides first rate facilities with onsite building manager, gym and BBQ area. An exciting opportunity to enjoy convenient apartment living in fresh, open and picturesque surrounds.

- Two-bedroom apartment of 86sqm, level 5 of security building besides Cooks River
- Open plan living/dining/kitchen with timber flooring, natural light and park views
- Sleek modern gas kitchen with island bench, stone surfaces and superior appliances
- Sizeable east-facing balcony with expansive views of parklands and skyline
- Two bright bedrooms with built-ins and park views, master with ensuite
- Two fully tiled bathrooms with elegant fittings and fixtures
- Security car space, separate study nook, European style laundry, air conditioning
- Onsite building manager, exclusive gym and BBQ area
- Right next to Cahill Park, local cafes, eateries and Woolworths supermarket
- Moments to Wollli Creek station, with an 18-minute train trip to the CBD

Outgoings:

Strata: \$1299 per quarter

Council: \$364 per quarter

Water: \$150 per quarter