

63 Ridge Square, Leppington, NSW 2179

House For Sale

Wednesday, 7 February 2024



63 Ridge Square, Leppington, NSW 2179

Bedrooms: 4

Bathrooms: 1

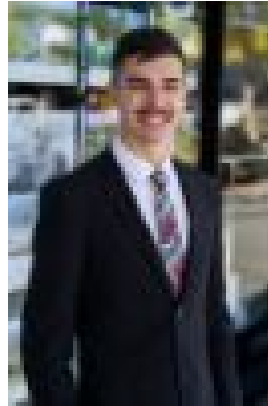
Parkings: 8

Area: 2 m2

Type: House



Joe Safi
0410798219



Hayden Cortis
0401842143

Offers Invited

Nestled in the heart of Sydney's South West Growth Precinct, offering unparalleled opportunity for investors and developers. This expansive 5-acre property is a developers delight draft zoned R2, presenting endless possibilities for residential development. Strategically located, just 13km from the upcoming Western Sydney International Airport (opening 2026) and a mere 2.4km from Leppington Railway Station, ensures unparalleled convenience and connectivity. Situated on the opposite side of Camden Valley Way to Willowdale Estate, with development underway in the same street, this property provides a tranquil rural setting without sacrificing accessibility to essential amenities. Don't miss your chance to secure this prime piece of real estate in one of Sydney's most sought-after areas. Don't miss out! Disclaimer: All information contained herein is true and correct to the best of our ability however, we encourage all interested parties to carry out their own enquiries at all times and to not solely rely on the information and photos provided here within as well as discussions with agents or their representatives.