

8 Whitley Avenue, Kellyville, NSW 2155

MANOR

House For Rent

Friday, 3 May 2024

8 Whitley Avenue, Kellyville, NSW 2155

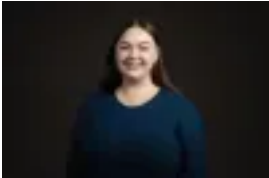
Bedrooms: 3

Bathrooms: 2

Parkings: 2

Area: 249 m2

Type: House



AMBER DAVIES
0296395833



GABRIEL OCAMPO
0296395833

\$830 per week

Proudly presenting this modern family home situated in the heart of the booming Kellyville community. Offering an open plan and sun-drenched layout with an effortless flow between indoor and outdoor entertaining as well as three spacious bedrooms of accommodation upstairs. Close to all life's amenities, this golden location is sure to please the whole family! Within walking distance to Woolworths Kellyville Grove, local parks including Kellyville Memorial Reserve Sports Grounds and close proximity to quality local schools, cafes, childcare centres, City buses, Kellyville Metro and easy access to main arterial roads. Additional features include: * Foyer entrance * Study nook * Combined living and dining area that flows out to the alfresco area * Open plan kitchen with island benchtop, breakfast bar seating, ample storage and stainless-steel appliances including gas cooktop * Three generous sized bedrooms with built-in robes to two and a large walk-in robe and ensuite to the master * Modern family bathroom with built-in bath and separate shower * Additional powder room downstairs for guests * Internal laundry room with external access also * Ducted air-conditioning * Undercover alfresco entertaining area * Manicured and low maintenance grassed backyard * Double car lock-up garage with storage space * Solar panels 6.6 kw system * Bella Vista Public School Catchment * Crestwood High School Catchment * Close to bus, T-way bus and metro stations (Bella Vista & Kellyville) * Very close to Woolworths Kellyville Grove * Short walk to Rutherford Ave Reserve * Close to Balmoral Sport Complex * Close to Kellyville Memorial Park Reserve * Close to Norwest Business Park * Close to Parklea Markets